



# SURFACE CASING VENT / GAS MIGRATION LEAK IDENTIFICATION

[RAL-CBL-DS-NST-Temp-GR]

[www.Downtons.com](http://www.Downtons.com)

## Challenge

A Surface Casing Vent Leak (SCVL) is often caused by poor cement bonding between the casing and formation allowing gas or fluid to migrate along the outside of the production string and escape to atmosphere via the Surface Casing vent. Well safety regulations stipulate that prior to conducting a surface abandonment, the licensee must repair all surface casing vent leaks and maintain well integrity.

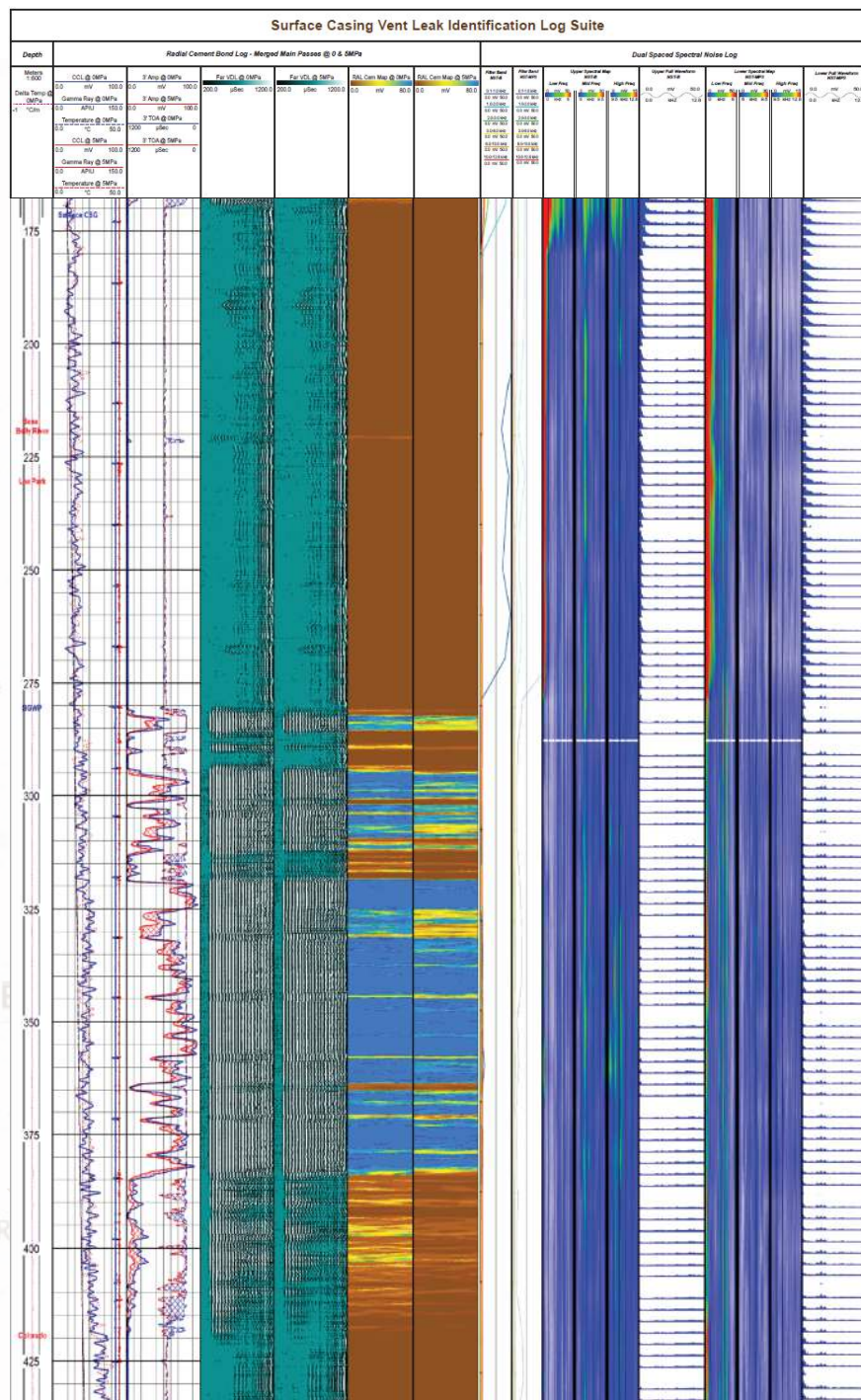
## Solution

Downton's Energy Services conducted a Surface Casing Vent Leak Detection Survey [SCVL-DS].

Tool configuration consisted of the Downton's proprietary Dual Spectral Noise tool and Gamma Ray, CCL, Temperature, and Radial Cement Bond tool. Logging speeds are considerably faster than industry standards, capable of gathering complete data packages at >500m/hr.

Utilizing StarLink™ satellite communication and local experienced Analysts, fast turn around of the data often allows for same day remedial

**Downton's Completions**  
**SCVL-Detection Survey quickly**  
**locates the source of Surface Casing**  
**Vent Leaks, enabling effective**  
**remediation & complete restoration of**  
**well integrity.**



**Downton's**  
**ENERGY SERVICES**

A BUSINESS UNIT OF *Downton's* TRANSPORT LTD.

AB Dispatch: 403.885.4560

BC Dispatch: 778.256.4506

Lacombe - Blackfalds - Fort St. John  
Grande Prairie - Saskatoon - Calgary