



# TWG Ultra-Light Weight Cement Bond Log

[ULW-DSCBL-RAL-GR-Temp-CCL]

www.Downtons.com

## Description

Downton's Energy Services proprietary **TWG Ultra-Lite Weight Cement Bond** evaluation services have been developed to evaluate both casing and cement attenuations responses to positively identify good cement placement and hydraulic isolation in today's modern wellbore design configurations.

When cement densities are below  $1400\text{kg/m}^3$  (11.7ppg), to as low as  $1050\text{kg/m}^3$  (9.5ppg), full casing attenuation analysis with conventional processing can cause misleading cement placement and hydraulic isolation determinations. Utilizing Downton's proprietary methods of full waveform evaluation, a complete representation of cement placement and bonding can be identified.

The tool also provides a cement map through the six to eight segmented receivers, each covering a 60-30° section of the casing to formation annulus, for full Radial Cement condition analysis.

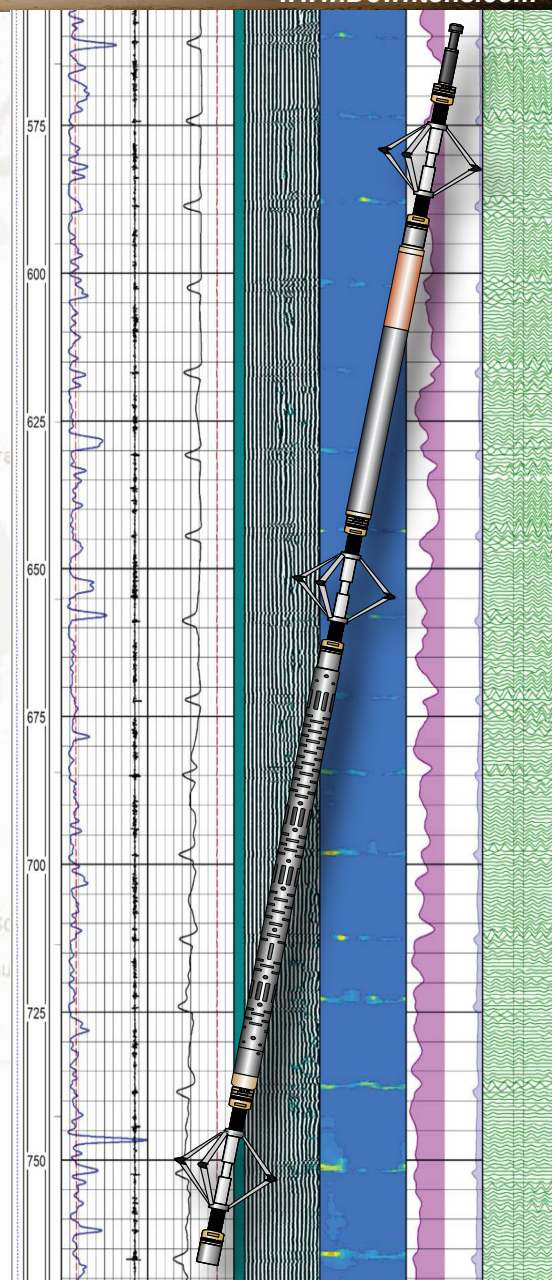
The Highspeed acquisition rate of 20 mSec allows for logging speeds of **30 m/min** for Main Passes and >100 m/min for complete well-bore snapshots, over three times (3x) the logging speed of conventional logging tools.

## Applications

- Lite-Weight Density Cement Analysis ( $<1050\text{kg/m}^3$ )
- Evaluation of cement bond quality and integrity
- Location of free-pipe and cement-top
- 360° Cement mapping

## Features

- Rated for High-Temperature & High-Pressure environments
- Rigid design ideal for horizontal logging
- High-speed Data capture for fast logging speeds
- Integrated Gamma Ray, CCL & Hi-Res Temperature sensors



Maximum Logging Speed	30 m/min (100 ft/min)		
Maximum Temperature	204°C (400°F)		
Maximum Pressure	172.4 MPa (25,000 PSI)		
Measurements	3ft Amp, 3ft TT, Radial Amp, Radial TT 5ft VDL, Gamma Ray, Temperature, CCL (Optional Delta TT, Pseudo-Attenuation)		
	HSR-10	HSR-20	HSR-35
Receivers	Near & Far = Omni Radial = 6x Segments	Near & Far = Omni Radial = 8x Segments	Near & Far = Omni Radial = 12x Segments
Tool Diameter	42.8mm (1-11/16 in)	68.8mm (2-3/4 in)	88.9mm (3-1/2 in)
Tool Length	4.8m (14.75 ft)	6.7m (21.9 ft)	6.9m (25.2 ft)
Tool Weight	33 kg (73 lbs.)	91 kg (200 lbs.)	166.5 kg (367 lbs.)
Maximum Casing ID	219mm (8-5/8 in)	339mm (13-3/8 in)	609mm (24 in)
Minimum Casing ID	50.8mm (2 in)	89mm (3-1/2 in)	140mm (5-1/4 in)

**Downton's**  
**ENERGY SERVICES**

A BUSINESS UNIT OF **Downton's** TRANSPORT LTD.

AB Dispatch: 403.885.4560

BC Dispatch: 778.256.4506

Lacombe - Blackfalds - Fort St. John  
Grande Prairie - Saskatoon - Calgary