



# RADIAL CEMENT BOND TOOL

[DSCBL-RAL-GR-Temp-CCL]

www.Downtons.com

## Description

The Downton's Energy Services High-Speed Radial Cement Bond Analysis tool evaluates the cement bond quality and integrity to both pipe and formation by providing the measurements of cement bond amplitude (AMP) and  $E_1$  transit time (TT) through the near receiver (3 ft), and the variable density log (VDL) through the far receiver (5 ft).

This tool also provides a cement map through eight segmented receivers, each segment covers a 30-60° section of the pipe. Maps may be generated for amplitude (AMP),  $E_1$  transit time (TT) or a pseudo-attenuation (ATTN) output for detailed analysis.

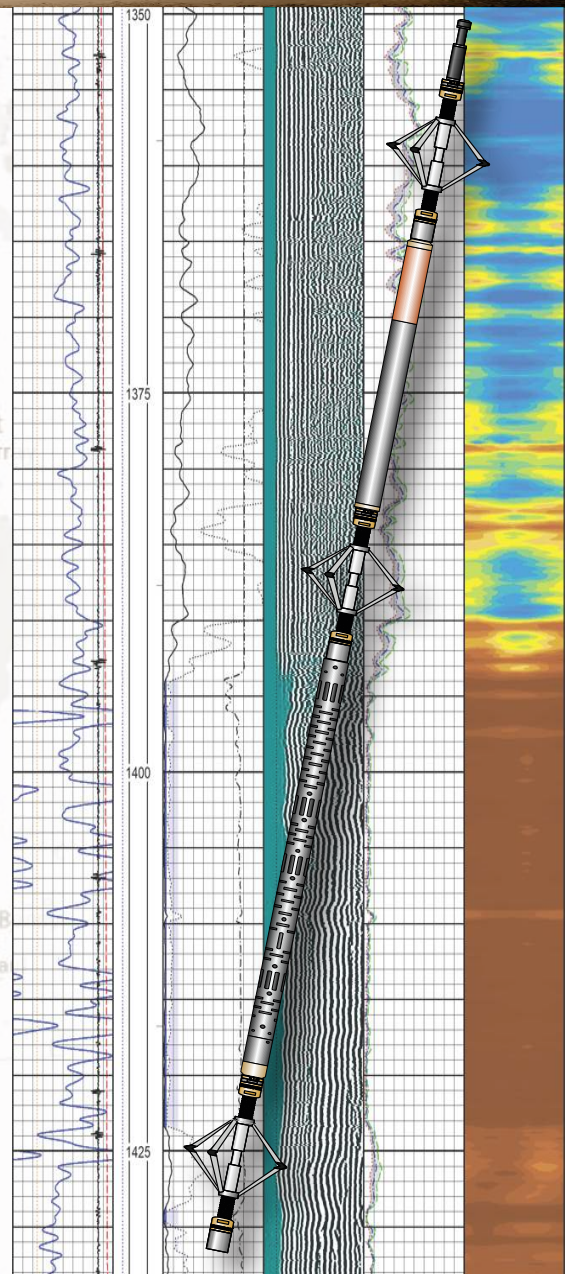
With sonic data being captured within 2mSec after the transmitter fires, logging speeds of 30 m/min for Main Passes and 100 m/min for complete well-bore Highspeed Overviews are easily accomplished, over three times (3x) the logging speed of conventional bond logging tools.

## Applications

- Evaluation of cement bond quality and integrity
- Location of free-pipe and cement-top
- 360° Cement mapping

## Features

- Rated for High-Temperature & High-Pressure environments
- Rigid design ideal for horizontal logging
- High-speed Data capture for fast logging speeds
- Integrated Gamma Ray, CCL & Hi-Res Temperature sensors



Maximum Logging Speed	30 m/min (100 ft/min)		
Maximum Temperature	204°C (400°F)		
Maximum Pressure	172.4 MPa (25,000 PSI)		
Measurements	3ft Amp, 3ft TT, Radial Amp, Radial TT 5ft VDL, Gamma Ray, Temperature, CCL (Optional Delta TT, Pseudo-Attenuation)		
	HSR-10	HSR-20	HSR-35
Receivers	Near & Far = Omni Radial = 6x Segments	Near & Far = Omni Radial = 8x Segments	Near & Far = Omni Radial = 12x Segments
Tool Diameter	42.8mm (1-11/16 in)	68.8mm (2-3/4 in)	88.9mm (3-1/2 in)
Tool Length	4.8m (14.75 ft)	6.7m (21.9 ft)	6.9m (25.2 ft)
Tool Weight	33 kg (73 lbs.)	91 kg (200 lbs.)	166.5 kg (367 lbs.)
Maximum Casing ID	219mm (8-5/8 in)	339mm (13-3/8 in)	609mm (24 in)
Minimum Casing ID	50.8mm (2 in)	89mm (3-1/2 in)	140mm (5-1/4 in)

**Downton's**  
**ENERGY SERVICES**

A BUSINESS UNIT OF **Downton's** TRANSPORT LTD.

AB Dispatch: 403.885.4560

BC Dispatch: 778.256.4506

Lacombe - Blackfalds - Fort St. John  
Grande Prairie - Saskatoon - Calgary