



MAGNETIC THICKNESS & MULTI-CALIPER CASING INTEGRITY [MTT-MFC/40-GR]

www.Downtons.com

Description

The Magnetic Thickness tool (MTT) combined with the Multi-Caliper 40 Arm tool (MCT/40) is a winning combination for corrosion evaluation and monitoring surveys for pipe metal thickness. It provides internal and external metal loss, detects pitting and gradual wall loss, and provides qualitative 3D images of well conditions.

An alternating magnetic wave emitted from the tool permeates through the well fluid to the casing before passing along the casing to the tool sensors mounted on bow-springs. The velocity and amplitude of the received signal is impacted by the metal thickness.

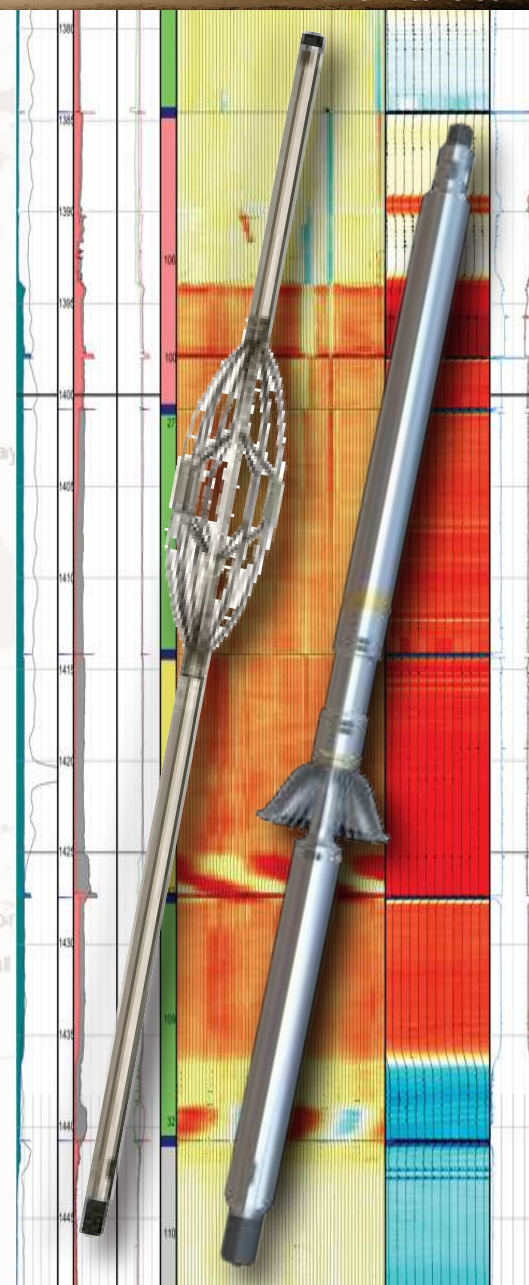
MCT and MTT data are automatically processed with specialized software providing a joint-by-joint statistical analysis and generating a report summarizing the condition of pipe in the well.

Applications

- Casing and tubing thickness evaluation
- Time-lapse metal loss studies
- Well integrity evaluation

Features

- Pipe inspection for internal and external metal loss
- Wall thickness surveys
- Multiple casing sizes in one pass
- 3D visualization using imaging software



Maximum Logging Speed	10 m/min (30 ft/min)
Maximum Temperature	175°C (345°F)
Maximum Pressure	100 MPa (14,500 PSI)
EMT Sensors	Twelve (x12) - Bow Spring Design Forty (x40) - Caliper Arms
Measurements	Gamma Ray - 40x Caliper - Inclination 12x Magnetic Thickness - Rotation (Optional: Min/Max ID, CBL, Temperature)
Tool Diameter MTT	43mm (1-11/16 in)
Tool Diameter MCT/40	73mm (2-7/8 in)
Tool Weight	91 kg (200 lbs.)
Maximum Casing ID	178mm (7 in)
Minimum Casing ID	114mm (4-1/2 in)

Downton's
ENERGY SERVICES

A BUSINESS UNIT OF **Downton's** TRANSPORT LTD.

AB Dispatch: 403.885.4560

BC Dispatch: 778.256.4506

Lacombe - Blackfalds - Fort St. John
Grande Prairie - Saskatoon - Calgary