



ELECTROMAGNETIC DEFECTOMETER CONCENTRIC CASING INSPECTION

[EMT-06]

www.Downtons.com

Description

The Electromagnetic Defectometer is designed to measure the metallic damage of two concentric casing strings (eg. Production Tubing & Production Casing).

The EMT-06 measures the remaining wall thickness and accurately indicates damage types such as transversal/axial cracks or corrosion, the tubing structure and downhole assembly tool location.

This allows the production casing condition to be observed without the time and costs associated with pulling the Tubing assembly.

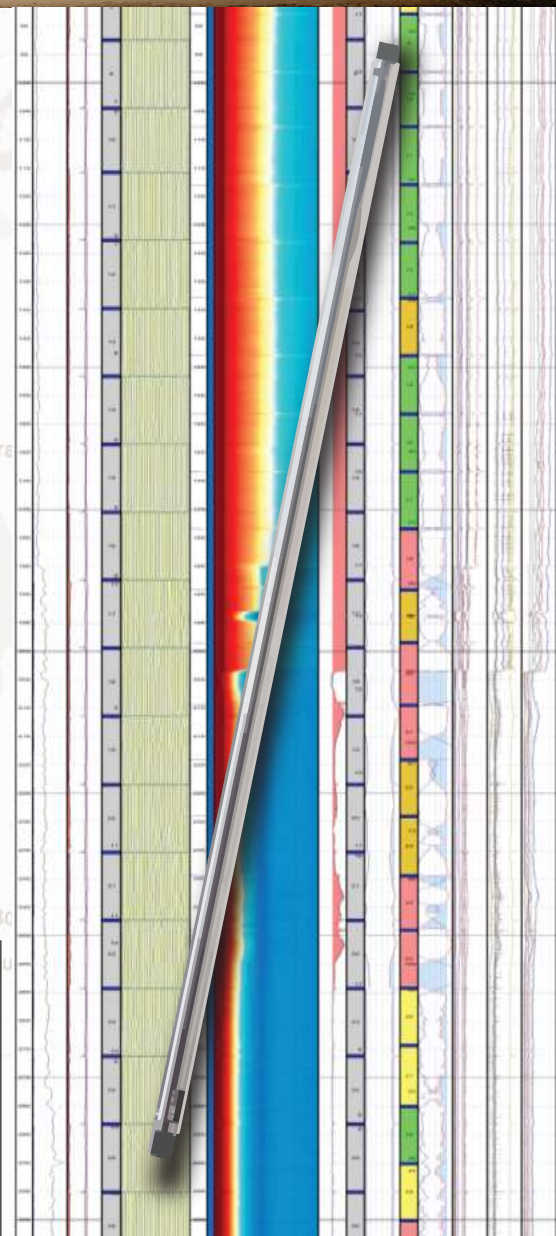
Applications

- Measure remaining wall thickness in a single pass
- Time-lapse metal loss studies
- Well integrity evaluation

Features

- Pipe inspection for internal and external metal loss
- Wall thickness surveys
- Multiple casing in one pass

Maximum Logging Speed	5 m/min (16 ft/min)
Maximum Temperature	175°C (345°F)
Maximum Pressure	100 MPa (14,500 PSI)
EMT Sensors	Slick Wall - Short Sonde / Lateral Sonde & Long Sonde
Measurements	Gamma Ray / Short Sonde Cx6 / Lateral Sondes Bx3 & BBx3 / Long Sonde Ax11 / Temperature
Tool Diameter EMT06	43mm (1-11/16 in)
Thickness Measurement Error	Single 0.5mm Double 1.5mm
Min Detectable "Axial Crack" Length	2.5 Single 50mm 5.5 Single 70mm Double 150mm
Min Detectable "Transversal Crack" Length	1/6 Perimeter
Min Detectable Diameter of Pits	30mm
Measuring Range of Single Pipe	3-12mm
Measuring Range of Double Pipe	Max. 25mm



Downton's
ENERGY SERVICES

A BUSINESS UNIT OF *Downton's* TRANSPORT LTD.

AB Dispatch: 403.885.4560

BC Dispatch: 778.256.4506

Lacombe - Blackfalds - Fort St. John
Grande Prairie - Saskatoon - Calgary